

### **Note!**

*To be used together with SD 502.*

*Before installing this product, check the contents of the kit. If anything is missing, please contact an Öhlins dealer.*

### **Kit Contents**

	Part No	Pcs
Bracket assy	Screw 6x12	00382-28 1
	Pin	15549-01 1
	Bracket 49/51	15550-54 1
	Washer 6.4/12/1.5	00153-04 1
	Washer 6.4/12/1.5	00153-04 1
	Screw 4x10	00382-25 6
	O-ring 49,5x3	00579-01 1
	X-ring	01027-09 1
	Tool NV19	04970-01 1
	Bracket	15505-25 1
	Plug	15507-02 1
	Washer 29.7/36.3/0.30	15527-03 1
	Seal washer	15551-05 1
	Nut M24x1,25	15552-16 1
	Nut M25x1	15553-03 1

*Please note that during storage and transportation, especially at high ambient temperature, some of the oil and grease used for assembling may leak and stain the packaging. This is in no way detrimental to the product, wipe off the excessive oil/grease with a cloth.*

### **Warning!**

*Before installing this product, read the Öhlins Owner's Manual. The steering damper is an important part of your vehicle and will affect the stability.*

## **SD 502 Mounting Kit for GasGas EC300 (2T)**

# **SD 573**

## **Mounting Instructions**

# HOW TO INSTALL

## ⚠ Warning!

*It is advisable to have an Öhlins dealer install the steering damper.*

*When installing, consult your Vehicle Service Manual.*

## ⚠ Warning!

*Make sure the vehicle is securely supported so that it will not tip.*

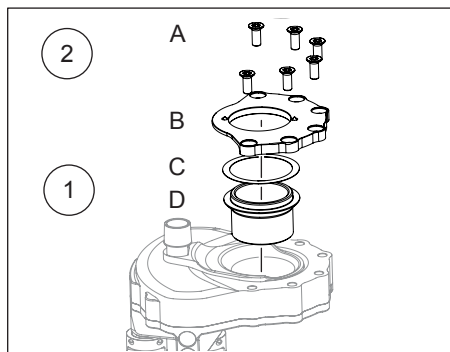


**1**

Pre-assemble the steering damper. Place nut and washer (15552-16(D), 15527-03 (C)) according to figure. Use grease on both sides of the washer (C).

**2**

Mount the bracket (15505-25 (B)) with the six screws (00382-25 (A)). Use thread locking fluid and tighten to 4 Nm.



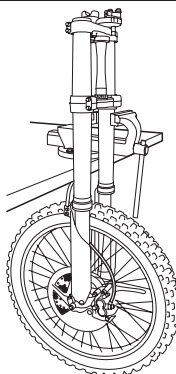
**3**

Put the motorcycle on a workstand. Remove the front fork and triple clamps. Remove original upper steering stem nut and top triple clamp. Remove lower steering stem nut, lower triple clamp, dust seal, washer, upper steering head bearing.

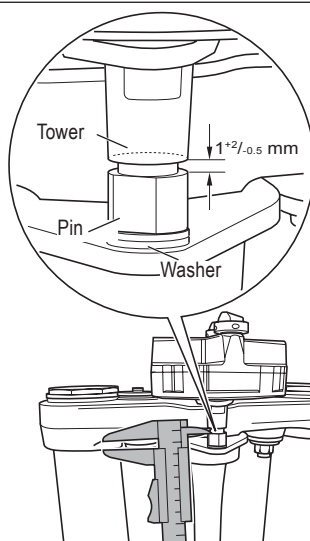
**4**

To prevent difficult removal and remounting, perform a premounting and measuring procedure; Place the fork in a vice and mount the provided bracket, triple clamps and steering damper.

**4**



**5**



**5**

Measure the distance between the top of the tower and the pin with a slide gauge. This is just a first rough estimation of the distance.

## ⚠ Caution!

*The gap between the tower and the pin must be  $1^{+2}_{-0.5}$  mm. The tower shall never touch the lower part of the pin at any position between the steering stops. There shall always be a visible gap. If washers are added/removed, retighten the tower to 11 Nm and use thread locking fluid.*

**6**

If the distance is too large, use washers between pivot and bracket.

## **Note!**

*The pins at the bottom of the steering damper have not been pressed into the triple clamp, which makes the distance 1mm larger.*

**7**

Remove the steering damper and triple clamp.

**8**

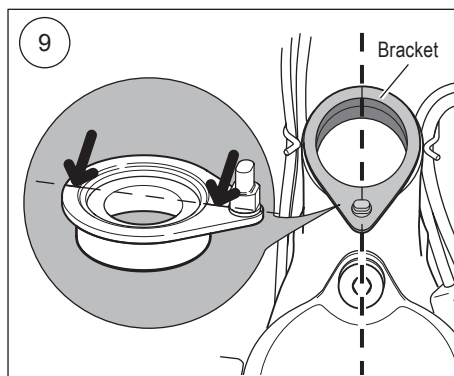
Remove the outer ring of the upper steering head bearing. Remove the original dust seal on the bearing, if any.

**9**

Replace the outer ring with the bracket provided. Mount o-ring (00579-01) on the cylindrical part of the bracket. The bracket must be press fitted into the steering head, use proper tools.

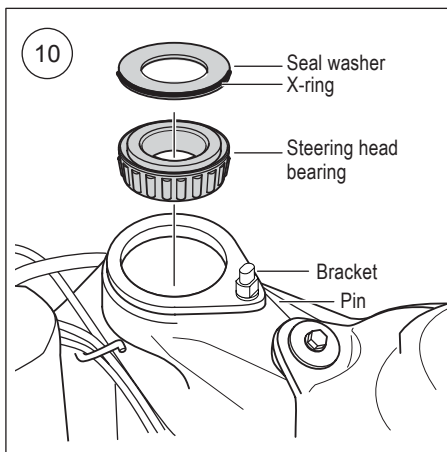
## **Caution!**

*The bracket must be installed in a straight line. Follow the sight line on the bracket, see figure.*



**10**

Apply some grease on the x-ring and install it (do not twist it) in to the groove on the seal washer. Put grease and install the original steering head bearing and the seal washer provided (the provided seal washer replaces the original dust seal, if any). The flat side of the seal washer facing up.



**11**

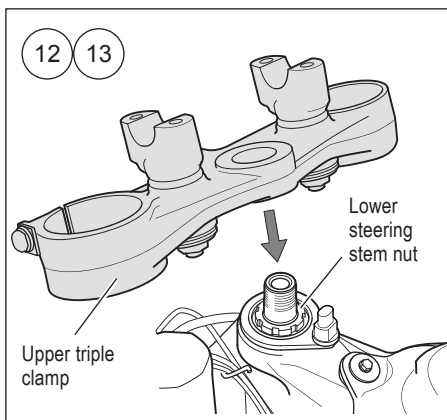
Put some grease inside the tower to avoid the noise that otherwise can occur.

**12**

Install the lower triple clamp. Replace the lower steering stem nut with the nut provided in this kit (15553-03), use grease between nut and seal washer.

**13**

Reinstall the upper triple clamp and fork legs. Tighten the bolts on the lower triple clamp to recommended tightening torque according to the Vehicle Service Manual.



# HOW TO INSTALL

## **Caution!**

*It is of critical importance that the damper is mounted in a straight line according to the figure. The two small pins will be pressed down into the upper triple clamp when the upper steering stem nut provided is tightened.*

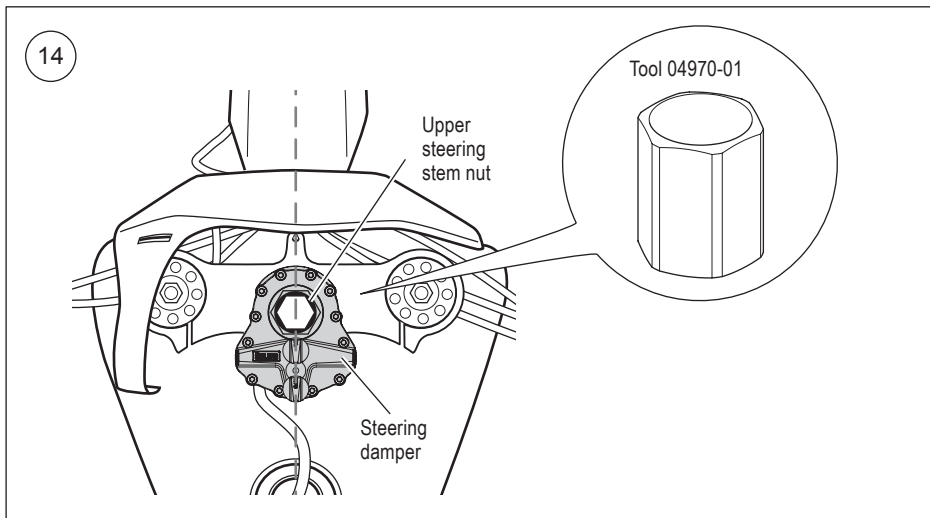
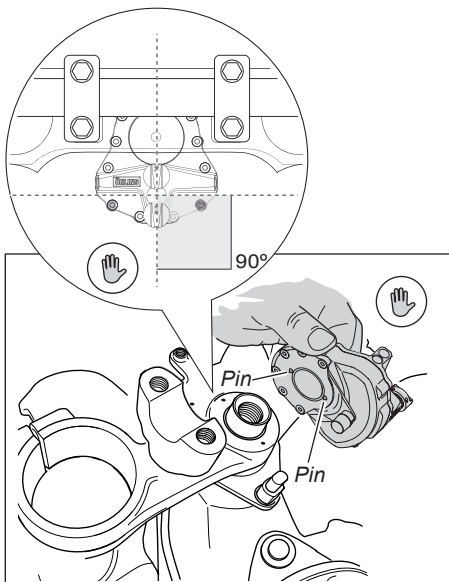
## **14**

Use a torque wrench and tool 04970-01 (provided in this kit). Tighten the upper steering stem nut to 100 Nm.

## **Note!**

*All threads on the upper steering stem nut will not be used, that is correct as long as the nut is tightened properly.*

*Recommendation: Minimum 4 [four] full turns of engagement.*



## 15

Again, measure the distance between the top of the tower and the pin to ensure that the gap is within the tolerance ( $1^{+2}_{-0.5}$  mm).

## 16

Make sure that the steering stops work properly. Tighten the upper triple clamp bolt to recommended tightening torque.



### Caution!

*The damper should not act as a steering stop since that can damage and possibly break the steering damper.*

## 17

Reinstall all removed parts in reversed order.

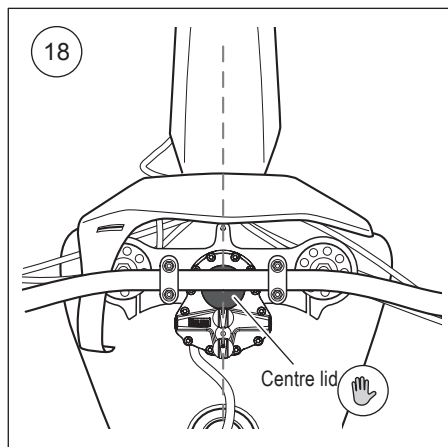
## 18

Install the centre lid by pressing it into the hex opening. Use an M6 screw and a pair of pliers if you must remove the lid.



### Caution!

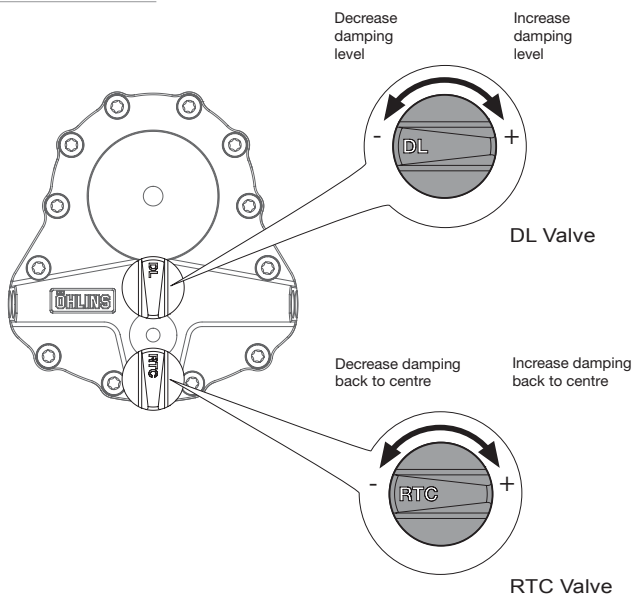
*Do not try to remove the lid with a screwdriver - the lid will break!*



# ADJUSTMENTS

## ⚠ Warning!

*Before riding, always make sure that the basic settings made by Öhlins are according to recommended Set-up Data. Read about adjustments and setting up in the Öhlins Owner's Manual before you make any adjustments. Contact an Öhlins dealer if you have any questions about setting up the steering damper.*



## Recommended set-up

### Motocross:

DL Valve	12 clicks
RTC Valve	6 clicks

👁️ Öhlins products are subject to continuous improvement and development, therefore, although these instructions include the most up-to-date information available at the time of printing, minor updates may occur.

*To find the latest information contact your Öhlins distributor. Please consult your Öhlins dealer if you have any questions regarding the contents in this document.*

Part no. SD573\_0  
Issued 2013-04-10



© Öhlins Racing AB. All rights reserved. Any reprinting or unauthorized use without the written permission of Öhlins Racing AB is prohibited.

Öhlins Racing AB  
Box 722  
S-194 27 Upplands Väsby, Sweden  
Phone +46 8 590 025 00  
fax +46 8 590 025 80



[www.ohlins.com](http://www.ohlins.com)