

Mounting Instructions

WITH SET-UP DATA

Hydraulic Spring Pre-load Adjuster
for Öhlins Shock Absorber type 46

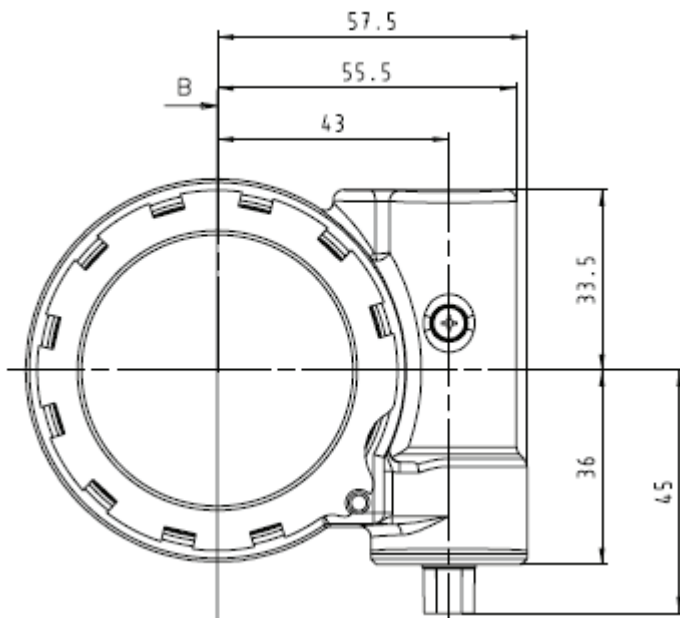
Integrated adjuster

ratio 2:1

Kit part no.

03645-01 (left)

03646-01 (right)



Before installing this product, read the Öhlins Owner's Manual!



Öhlins Racing AB, Box 722, S-194 27 Upplands Väsby, Sweden.

Phone +46 8 590 025 00 Fax +46 8 590 025 80

www.ohlins.com

BEFORE YOU BEGIN

During storage and transportation, especially at high ambient temperature, some of the oil and grease used for assembling may leak and stain the packaging. This is in no way detrimental to the product, wipe off the excessive oil/grease with a cloth.

⚠ WARNING!

It is advisable to have an Öhlins dealer install the shock absorber.

Installing a hydraulic spring preload adjuster that is not approved by the vehicle manufacturer, may affect the stability of your vehicle. Öhlins Racing AB cannot be held responsible for any personal injury or damage whatsoever that may occur after fitting the hydraulic spring preload adjuster. Contact an Öhlins dealer for advice.

Öhlins Racing AB cannot be held responsible for any damage whatsoever to this product or vehicle, or injury to persons, if the instructions for installing and maintenance are not followed exactly. Similarly, the warranty will become null and void if the instructions are not followed.

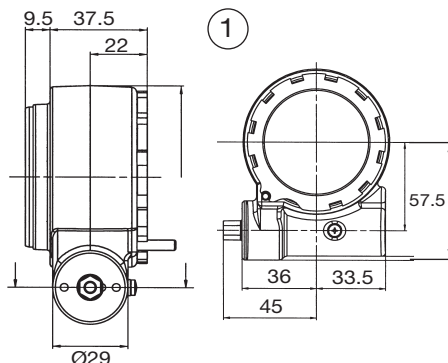
Please study and make certain that you fully understand these mounting instructions and the Owner's Manual before handling this kit. If you have any questions regarding proper installation procedures, contact an Öhlins dealer.

Always refer to your vehicle manual when installing this product.

MOUNTING INSTRUCTIONS

1

First, check if there is room enough around the top of the shock absorber when it is installed on the motorcycle.



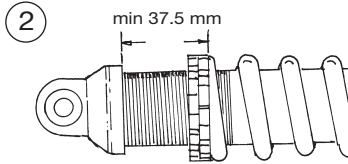
Integrated master and slave unit

2

Check also that there is enough room on the shock absorber.

NOTE!

Minimum 37.5 mm free space above the top end of the spring.



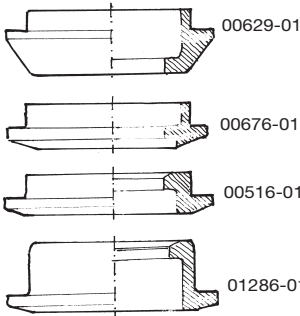
NOTE!

You may need to replace the spring or spring clip to be able to install the preload adjuster.

If you change the spring clip:

Make sure that there is clearance for the new spring clip. Install the shock absorber on the motorcycle, without the spring installed. Move the rear wheel until you use the full stroke of the shock absorber. Check that there are no problems with clearance.

Spring clip	Height difference to 00629-01
00629-01	0 mm
00676-01	-7.5 mm
00516-01	-14.5 mm
01286-01	-24.5 mm



If you change to a shorter spring:

Add initial preload and the stroke of the shock absorber, and also the maximum adjustment range of the preload adjuster (8-10 mm). The sum of the above should not exceed the maximum stroke for the chosen spring.

Example:

- Initial preload: 12 mm
 - Shock absorber stroke: 65 mm
 - Adjustment range: 10 mm
- $12 + 65 + 10 = 87$

The new spring needs a maximum stroke of minimum 87 mm.

3

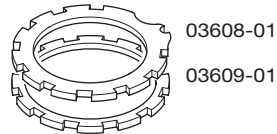
Measure the installed length of the spring, make a note. Compress the spring, remove the spring clip and then remove the spring.

⚠ WARNING!

Do not remove the spring if you do not have the proper tools for compressing it, for example the Öhlins tool no. 00747-01.

4

Remove the original adjustment nuts and install the lock nuts for the preload adjuster. The guide nut (03608-01) should be on top of the lock nut (03609-01). Turn the guide nut in position and lock it with the lock nut.



5

Put the preload adjuster in position and install the spring by compressing it and then put the spring clip in place. Set the spring at the same installed length as the original (see step 3, measured length).

⚠ WARNING!

Make sure that all screws are tightened to the correct torque and that nothing fouls or restricts movement of the hydraulic preload adjuster when the suspension is being fully compressed or extended.

© Öhlins Racing AB. All rights reserved. Any re-printing or unauthorized use without the written permission of Öhlins Racing AB is prohibited.
Printed in Sweden.



Mounting Instructions 036XX-XX-HPA_1 Issued 20151111
These instructions and other documents
can be downloaded from
www.ohlins.com